

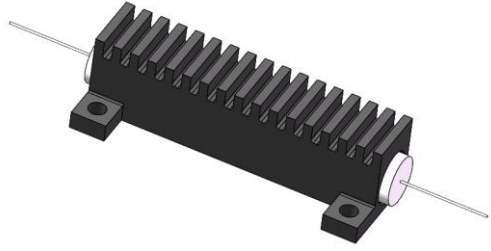
BUY NOW 

1310/1550 High Power Single Stage Optical Isolator

(patent pending)

Product Description

The OIHP Series 1310/1550 high power single stage optical isolator is designed for high power applications by guiding light at 1310/1550 nm in the normal direction while minimizing back reflection and back scattering in the reverse direction for any state of polarization. Employing Agiltron's proven advanced micro optics design, it features low insertion loss, high power handling, high isolation, compact structure, and high stability. These Telcordia qualified components have excellent characteristics, making them an ideal choice for application in fiber amplifier systems, pump laser diodes and optical fiber sensors.



Features

- Low Insertion Loss
- High Power Handling
- High Isolation
- Low PDL
- High Reliability
- Low Cost

Performance Specifications

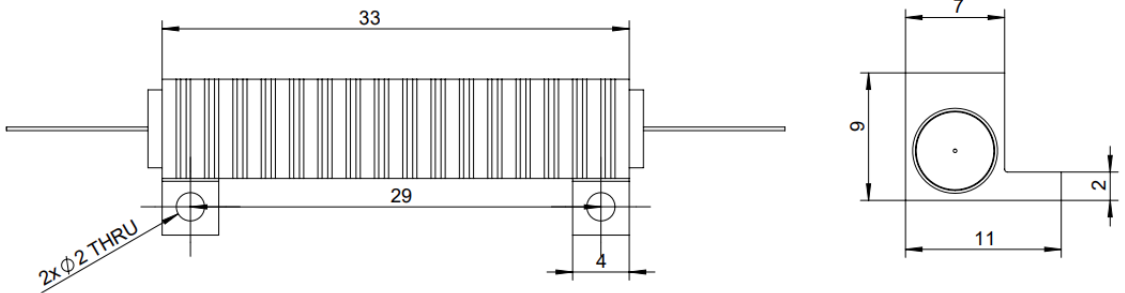
OIHP Single Stage		Specification	Unit
Operation Wavelength (λ_o)	1310	1310 \pm 15	nm
	C Band	1528 - 1564	
	L Band	1570 - 1605	
Typical Insertion Loss(Over λ_o , 0-70°C, SOP, no connector)		\leq 0.5	dB
Maximum Insertion Loss (Over λ_o , 0-70°C, SOP, no connector)		\leq 0.7	dB
Minimum Isolation (Over λ_o , 0-70°C, SOP)****		\geq 22	Typ \geq 32 * dB
Minimum Peak Isolation (Over λ_o , 23°C, SOP)		\geq 28	Typ \geq 38 * dB
Polarization Dependant Loss		\leq 0.15	dB
Polarization Mode Dispersion **		\leq 0.2	ps
Return Loss (Minimum, Input/Output)		\geq 55/50	dB
Operating Temperature		0 - +70	°C
Storage Temperature		-40 - +85	°C
Optical Power Handling		\leq 5****	W
Package Dimensions		LxWxH=33x11x9	mm
* At central wavelength **Special order for PMD \leq 0.05ps with compensator *** Continuous operation, for pulse operation call. Requiring mount the unit for heat dissipation. **** Back Reflect <10%. For >10% application, please call us.			

Applications

- Optical Fiber Amplifier
- Pump Laser Source
- Fiber Optic Sensor
- Instrumentation

1310/1550 High Power Single Stage Optical Isolator

Mechanical Dimensions



*Product dimensions may change without notice. This is sometimes required for non-standard specifications.

Ordering Information

OIHP-	10	<input type="checkbox"/>	<input type="checkbox"/>	<input type="checkbox"/>	<input type="checkbox"/>	<input type="checkbox"/>	<input type="checkbox"/>	1*
	Type	Wavelength	Grade	Package	Fiber Type	Fiber Length	Connector	
	10=Single stage	3=1310 C=C Band L=L Band 0=Special	1=Standard 0=Special	1=Ø5.5x40 0=Special	1=SMF-28 0=Special	1=Bare Fiber 3=900µm Loose Tube 0=Special	1=0.25m 2=0.5m 3=1.0m 0=Special	

* Agiltron provide high power connector, please call.