

BUY NOW 

2xN Single Mode PLC Splitter

Product Description

Planar lightwave circuit (PLC) splitter is a type of optical power management device that is fabricated using silica optical waveguide technology to distribute optical signals from Central Office (CO) to multiple premise locations. Bare fiber splitter is a kind of ODN product suitable for PON networks that can be installed in the pigtail cassette, test instrument and WDM system, which minimizes the space occupation.



Performance Specifications

Parameters	Specifications						Unit	
Wavelength	1260 ~ 1650						nm	
Ports	2x2	2x4	2x8	2x16	2x32	2x64	dB	
Insertion Loss ^{1,2}	4.3	7.6	11.2	14.5	18.2	21	dB	
Uniformity	0.8	1.0	1.5	2.0	2.5	3.0	dB	
PDL	0.2	0.3	0.3	0.4	0.4	0.3	dB	
Dimensions(HxWxL) (Bare Fiber & Ribbon Fiber)	4x4x45	4x4x55	4x7x60		4x12x80		mm	
Dimensions(HxWxL) (900um Tube)	4x4x55	4x7x60	4x12x80	6x20x80	N/A		mm	
Return Loss	50						dB	
Directivity	55						dB	
Power Handling	300						mW	
Working Temperature	-40						85	°C
Storage Temperature	-40						85	°C
Fiber type	Corning SMF28							
Connector Type	Custom specified							

1. Measured without connectors at room temperature
 2. For devices with connectors, ass 0.3dB to the IL

Features

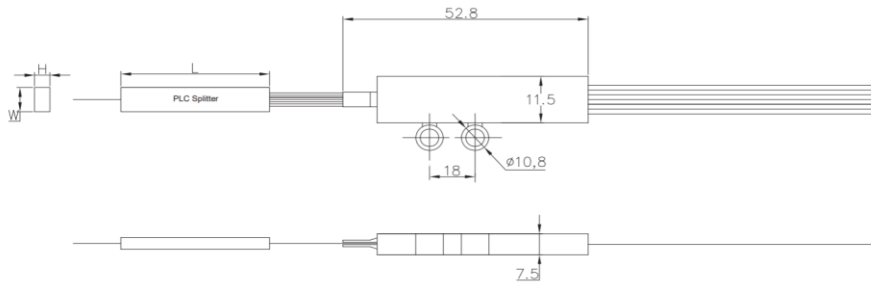
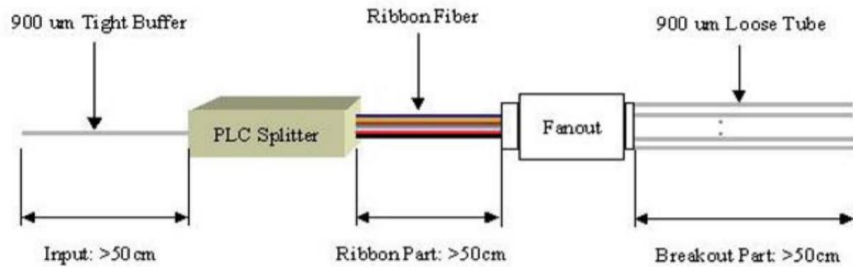
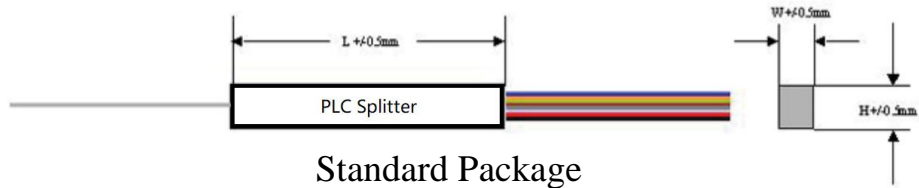
- Wide Operating Wavelength
- Ultra Low Excess Loss
- Low Polarization Sensitivity
- Highly Stable & Reliable
- High Uniformity
- Ultra Low Cost
- Telcordia GR-1221 and GR-1209 Qualified

Applications

- Telecommunications
- FTTX
- CATV
- LAN
- Passive Optical Network (PON)

2xN Single Mode PLC Splitter

Mechanical Dimensions



*Product dimensions may change without notice. This is sometimes required for non-standard specifications.

Ordering Information

PLC2	-A	<input type="checkbox"/>	<input type="checkbox"/>	<input type="checkbox"/>	<input type="checkbox"/>	<input type="checkbox"/>	<input type="checkbox"/>	<input type="checkbox"/>
		Wavelength	Port	Package	Fiber Type	Fiber Length	Input Connector	Output Connector
		1310=1 1550=2 13/15=3 Special =0	2x2=02 2x4=04 2x8=08 2x16=16 2x32=32 2x64=64	Standard=1 Fanout=2 Special=0	250um =1 Ribbon= 2 900um tube=3 3mm Cable=4 Special =0	0.25m= 1 0.5 m = 2 1.0 m = 3 1.5 m = 4 2.0 m = 5 Special =0	None = 1 FC/PC = 2 FC/APC = 3 SC/PC = 4 SC/APC = 5 ST/PC = 6 LC = 7 Special = 0	None = 1 FC/PC = 2 FC/APC = 3 SC/PC = 4 SC/APC = 5 ST/PC = 6 LC = 7 Special = 0