

BUY NOW 

High Power 1x2, 2x2 Multimode Fiber Optic Coupler/Splitter (30W)

Product Description

The HPFC Series fiber optic coupler is fully tested and burn-in at the specified high power for quality control. 2x2 can be used as 1x2 in which the reflected optical power is safely guided out through the extra fiber. An angle termination on the extra fiber is required to avoid backreflection. The coupler is based on Agiltron's fused biconical taper technology and compact packaging structure. It features good uniformity, low excess loss and very low polarization sensitivity. The device is ideal for splitting or combining light with exceptional performance over a wide wavelength range



Features

- Wavelength Independent
- Low Insertion Loss
- Low PDL
- Highly Stable & Reliable
- Ultra Low Cost

Performance Specifications

HPFC Series		Grade A	Unit
Splitting Ratio		1/99 to 50/50	
Bandwidth		915 ± 15 and 975± 15	nm
Excess Loss		<0.5	dB
Insertion Loss	50/50	<4.0	dB
	40/60	5.0/3.0	dB
	30/70	6.3/2.4	dB
	20/80	8.1/1.7	dB
	10/90	11.6/1.2	dB
	5/95	15.0/1.0	dB
	1/99	21.0/0.8	dB
Directivity		>40	dB
Uniformity		1.0	dB
Optical Power Handling		30	W
Operating Temperature		-40~85	°C
Storage Temperature		-50~85	°C
Fiber Types		105/125 NA=0.15 or NA=0.22	
Package Size (mm)		(ø)3x(L)54	mm
		(ø)3x(L)70	

Applications

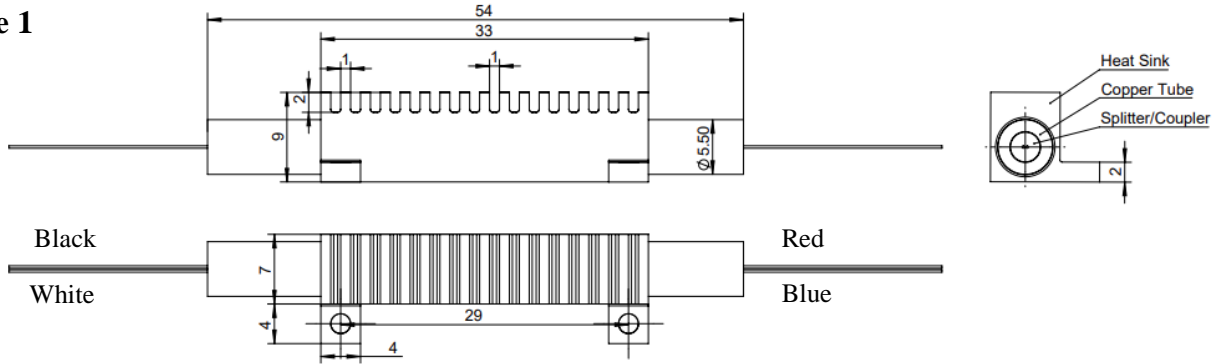
- Laser
- Instrument

Revised on 03/04/22
(Click here for latest revision)

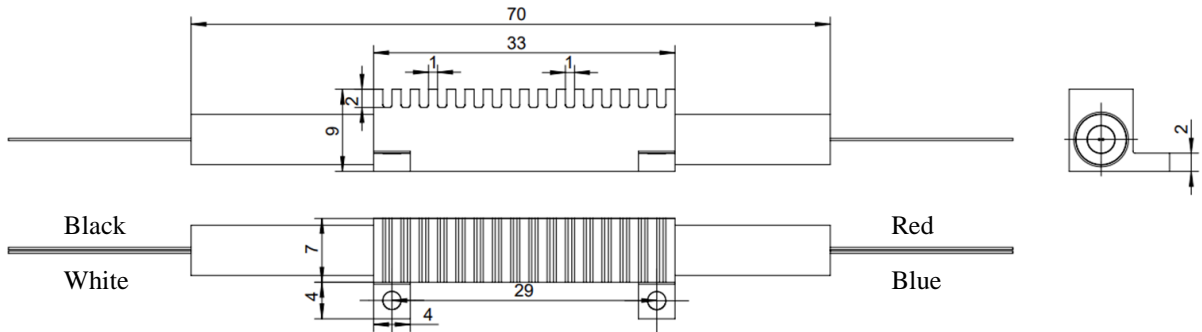
High Power 2x2 Multimode Fiber Optic Coupler/Splitter

Mechanical Dimensions (mm)

Package 1



Package 2



Ordering Information

HPFC-	Power	Wavelength	Grade	Package	Splitting Ratio	Fiber Type	Fiber Length	Connector
<input type="checkbox"/> <input type="checkbox"/> <input type="checkbox"/> <input type="checkbox"/> <input type="checkbox"/> <input type="checkbox"/> <input type="checkbox"/> <input type="checkbox"/> <input type="checkbox"/>	3 = 30W	2 = 915 3 = 975 0 = Special	A = A Grade	1=(ø)3x(L)54 2=(ø)3x(L)70 0 = Special	1 = 01/99 2 = 02/98 3 = 05/95 4 = 10/90 5 = 20/80 6 = 30/70 7 = 40/60 8 = 50/50 0 = Special	2 = 0.15NA 105/125 3 = 0.22NA 105/125 0 = Special	1 = 0.5m 2 = 0.75m 3 = 1.0m 0 = Special	0 = None 1 = FC/PC 3 = FC/APC 0 = Special

Connector Note: These high power beam expanded connectors are made specially that must be used in pair with Agiltron type connectors. They are not compatible with regular connectors.

*Product dimensions may change without notice. This is sometimes required for non-standard specifications.