

**BUY NOW** 

# High Power PM Fiber Optic Coupler/Splitter 2x2 (10W, 20W)

## Product Description

The HPPC Series fiber optic coupler is fully tested and burn-in at the specified high power for quality control. 2x2 can be used as 1x2 in which the reflected optical power is safely guided out through the extra fiber. An angle termination is required to avoid back reflection. The coupler is based on Agiltron's fused biconical taper technology and compact packaging structure. It features good uniformity, low excess loss and very low polarization sensitivity. The device is ideal for splitting or combining light with exceptional performance over a wide wavelength range



## Performance Specifications

HPPC Series	Premium P	Grade A	Unit	
Splitting Ratio	0.5/99.5 to 50/50			
Bandwidth	1060 ± 40 and 1550 ± 40		nm	
Excess Loss <sup>[1]</sup>	0.07	0.1	dB	
	50/50	3.4/3.4	3.6/3.6	dB
	40/60	4.4/2.5	4.8/2.8	dB
	30/70	5.6/1.8	6.1/2.0	dB
	20/80	7.5/1.2	8.0/1.3	dB
	10/90	10.8/0.6	12.0/0.8	dB
Insertion Loss <sup>[1]</sup>	5/95	14.6/0.4	18.4/0.5	dB
	4/96	16.0/0.3	19.0/0.4	dB
	3/97	17.5/0.3	19.5/0.4	dB
	2/98	19.0/0.2	20.0/0.3	dB
	1/99	21.5/0.2	22.0/0.3	dB
	0.5/99.5	23.0/0.2	24.0/0.3	dB
Polarization Extinction Ratio <sup>[2]</sup>	22	18	dB	
Uniformity	0.6	1.0	dB	
Optical Power Handling	10, 20		W	
Operating Temperature	-40~85		°C	
Storage Temperature	-50~85		°C	
Package Dimension *	Bare fiber: (ø)3x(L)54			
	900um loose tube: (ø)3x(L)70		mm	
	900um loose tube: 90 (L) x16x9			

[1]. without connector. Each connector adds 0.3dB and 0.5dB for short wavelength

[2]. without connector. Each connector adds 2dB

## Features

- Wavelength Independent
- Low Insertion Loss
- Low PDL
- Highly Stable & Reliable
- Ultra Low Cost

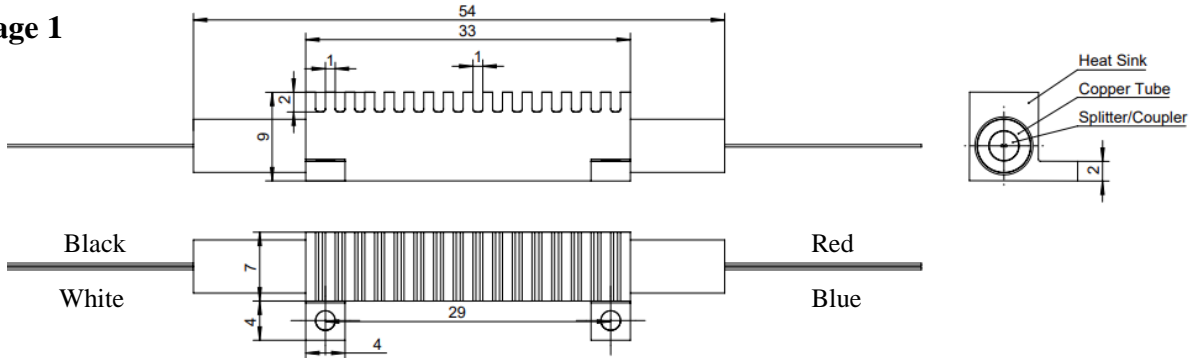
## Applications

- Optical communications
- FTTH
- Local Access Network (LAN)
- Fiberoptic Instrumentation

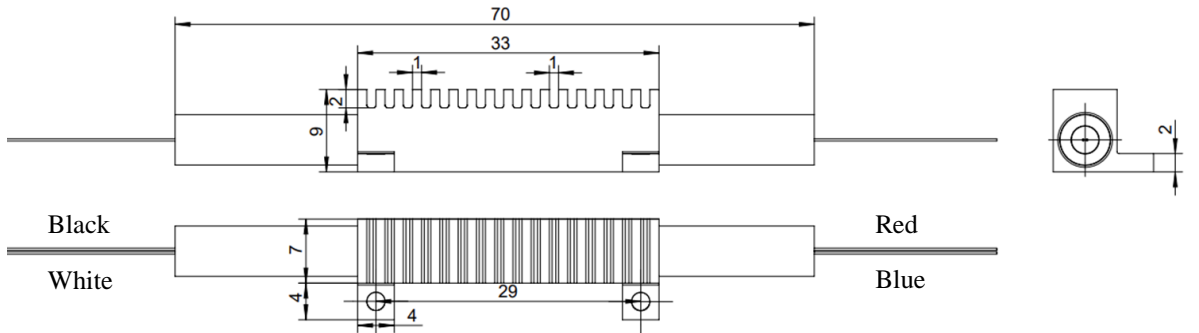
# 2x2 Single Mode High Power Fiber Optic Coupler/Splitter

## Mechanical Dimensions (mm)

### Package 1



### Package 2



\*Product dimensions may change without notice. This is sometimes required for non-standard specifications.

## Ordering Information

Prefix	Power	Wavelength	Grade	Package	Splitting Ratio	Fiber Type	Fiber Cover	Fiber Length	Connector*
HPPC-	10 = 1 20 = 2 30 = 3 40 = 4 50 = 5	1550 = 1 1060 = 6 Special = 0	P Grade = P A Grade = A	standard = 1 Special = 0	01/99 = 1 02/98 = 2 05/95 = 3 10/90 = 4 20/80 = 5 30/70 = 6 40/60 = 7 50/50 = 8 0.5/99.5 = 9 3/97 = A 4/96 = B Special = 0	PM 1550 = 2 Special = 0	250µm fiber = 1 900µm tube = 2 2mm cable = 3 3mm cable = 4 Special = 0	0.5m = 1 0.75m = 2 1.0m = 3 1.5m = 4 2.0m = 5 Special = 0	None = 1 FC/PC = 2 FC/APC = 3 Special = 0

**Connector Note:** These high power beam expanded connectors are made specially. They must be used in pair with Agiltron type connectors. They are not compatible with regular connectors.