

**BUY NOW** 

# High Power 2x2 Single Mode Fiber Optic Coupler/Splitter (10W, 20W)

## Product Description

The HPFC Series fiber optic coupler is fully tested and burn-in at the specified high power for quality control. 2x2 can be used as 1x2 in which the reflected optical power is safely guided out through the extra fiber. An angle termination is required to avoid back reflection. The coupler is based on Agiltron's fused biconical taper technology and compact packaging structure. It features good uniformity, low excess loss and very low polarization sensitivity. The device is ideal for splitting or combining light with exceptional performance over a wide wavelength range



## Features

- Wavelength Independent
- Low Insertion Loss
- Low PDL
- Highly Stable & Reliable
- Ultra Low Cost

## Performance Specifications

HPFC Series		Premium P	Grade A	Unit
Splitting Ratio		0.5/99.5 to 50/50		
Bandwidth		1060 ± 40 and 1550 ± 40		nm
Excess Loss		0.07	0.1	dB
Insertion Loss	50/50	3.4/3.4	3.6/3.6	dB
	40/60	4.4/2.5	4.8/2.8	dB
	30/70	5.6/1.8	6.1/2.0	dB
	20/80	7.5/1.2	8.0/1.3	dB
	10/90	10.8/0.6	12.0/0.8	dB
	5/95	14.6/0.4	18.4/0.5	dB
	4/96	16.0/0.3	19.0/0.4	dB
	3/97	17.5/0.3	19.5/0.4	dB
	2/98	19.0/0.2	20.0/0.3	dB
	1/99	21.5/0.2	22.0/0.3	dB
0.5/99.5		23.0/0.2	24.0/0.3	dB
Polarization Dependent Loss		0.1	0.15	dB
Uniformity		0.6	1.0	dB
Optical Power Handling		10, 20		W
Operating Temperature		-40~85		°C
Storage Temperature		-50~85		°C
Package Dimension *		(ø)3x(L)54		mm
		(ø)3x(L)70		

## Applications

- Optical communications
- FTTX
- Local Access Network (LAN)
- Fiberoptic Instrumentation

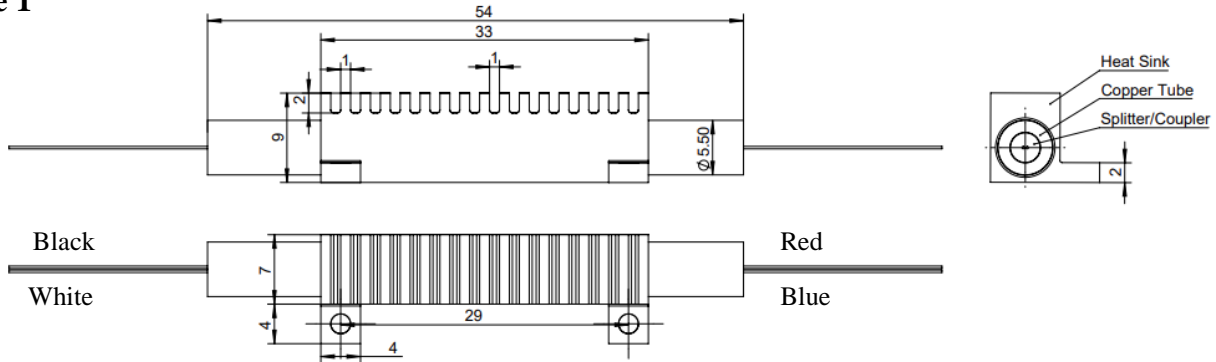
Revised on 08/09/22

(Click here for latest revision)

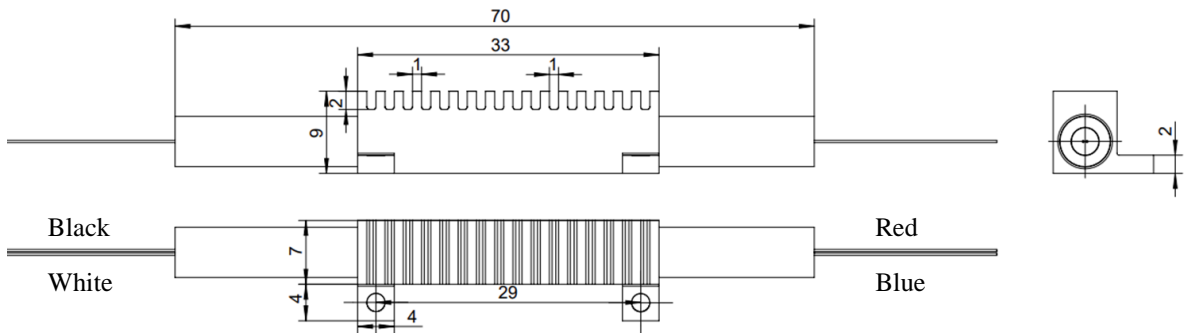
# 2x2 Single Mode High Power Fiber Optic Coupler/Splitter

## Mechanical Dimensions (mm)

### Package 1



### Package 2



## Ordering Information

HPFC-	Power	Wavelength	Grade	Package	Splitting Ratio	Fiber Type	Fiber Length	Connector*	
<input type="checkbox"/>	<input type="checkbox"/>	<input type="checkbox"/>	<input type="checkbox"/>	<input type="checkbox"/>	<input type="checkbox"/>	<input type="checkbox"/>	<input type="checkbox"/>	<input type="checkbox"/>	
	1 =10 2 =20 3 =30 4= 40 5 =50	1 = 1550 6= 1060 0 = Special	P = P Grade A = A Grade	1=( $\varnothing$ )3x(L)54 2=( $\varnothing$ )3x(L)70 0 = Special	1 = 01/99 2 = 02/98 3 = 05/95 4 = 10/90 5 = 20/80 6 = 30/70 7 = 40/60 8 = 50/50 9 = 0.5/99.5 A = 3/97 B = 4/96 0 = Special	1 = SM28 2 = Hi1060 0 = Special	1 = 250 $\mu$ m fiber 2 = 900 $\mu$ m tube 3 = 2mm cable 4 = 3mm cable 0 = Special	1 = 0.5m 2 = 0.75m 3 = 1.0m 0 = Special	0 = None 1 = FC/PC 3 = FC/APC 0 = Special

Connector Note: These high power beam expanded connectors are made specially that must be used in pair with Agiltron type connectors. They are not compatible with regular connectors.

\*Product dimensions may change without notice. This is sometimes required for non-standard specifications.