

# MEMS Fiber Optical Variable Attenuator Ø 5.5 mm 2D

(70dB attenuation, 850nm, 1260-1630nm, 500mW, bidirectional)



DATASHEET

[Return to the Webpage](#)



## Features

- High Repeatability
- Low Power
- Small

The VOAM Series of MEMS Fiber Optical Variable Attenuators (VOAs) are designed with an electrostatic rotating mirror, hermetically sealed with nitrogen for high reliability. These attenuators offer excellent repeatability, fast response, low power consumption, and cost-effectiveness. The optical attenuation is controlled by applying a voltage between 0-6V to the drive pin, and the device returns to its default state when power is removed. The VOAM has a capacitive electrical characteristic without polarity and can be mounted directly on printed circuit boards. These VOAs are bidirectional and comply with RoHS requirements and Telcordia GR1221 standards. A premium grade is available, offering low insertion loss of less than 0.5dB.

Agiltron also provides custom designs and modular assemblies to meet specific control and integration needs. For space applications, our 1D versions meet the qualification requirements.

## Specifications

Parameter	Min	Typical	Max	Unit
Operation Wavelength	Single Mode	780	2200	nm
	Multimode	810-890	1260-1360	
Insertion Loss <sup>[1], [2]</sup>		0.5	1.0	dB
PDL (SM)			0.3	dB
Repeatability (0-30, @15dB)		0.1	0.2	dB
Wavelength Dependent Loss (@20dB)	0.6	0.8	1.5	dB
Extinction Ratio (PM fiber)	18		30 <sup>[3]</sup>	dB
Repeatability (@10dB, 0-60 °C)	Uncompensated	0.3	0.5	dB
	Compensated		0.1	
Return Loss	SM, PM	50		dB
	MM	35		
Attenuation	SM, PM	45	70	dB
	MM	30	55	dB
Driving Voltage	SM, PM	0	6	V
	MM	0	9	
Response Time		0.5		ms
Repetition Rate		50	100	Hz
Durability		10 <sup>12</sup>		Cycle
Power Consumption			20	µW
Power Consumption (at maximum)			0.2	mW
ESD			500	V
Operating Temperature <sup>[4]</sup>	-10		70	°C
Storage Temperature	-40		85	°C
Optical Power Handling <sup>[5]</sup>		300	500	mW

### Notes:

[1]. Excluding connectors. Each connector adds 0.3dB @1550nm. Wavelength shorter and longer will increase loss.

[2]. Multimode IL measured @ Light Source CPR < 14dB

[3]. 30dB PER is available with special order

[4]. Lower temperature version is available, please call us

[5]. The power handling is inversely proportional to fiber core size. 300mW for 1230-1630nm SM.

**Legal notices:** All product information is believed to be accurate and is subject to change without notice. Information contained herein shall legally bind Agiltron only if it is specifically incorporated into the terms and conditions of a sales agreement. Some specific combinations of options may not be available. The user assumes all risks and liability whatsoever in connection with the use of a product or its application.

Rev 01/13/26

+1 781-935-1200

sales@agiltron.com

www.agiltron.com

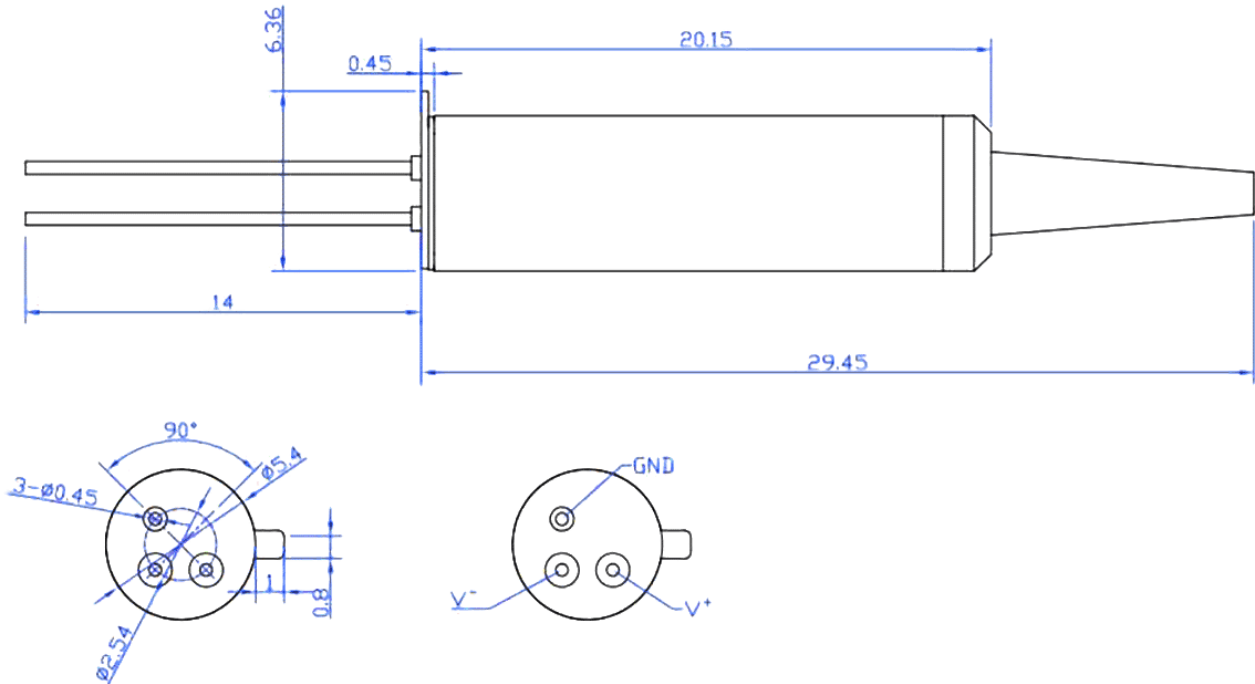
# MEMS Fiber Optical Variable Attenuator Ø 5.5 mm 2D

(70dB attenuation, 850nm, 1260-1630nm, 500mW, bidirectional)



DATASHEET

## Mechanical Dimensions (mm)



\*Product dimensions may change without notice. This is sometimes required for non-standard specifications.

## Electrical Driving Requirements

- 1) Capacitive load device, no polarity. Applying a voltage between Pin1 and Pin2
- 2) The maximum rating voltage is 12V
- 3) The ground pin is optional and can be cut off

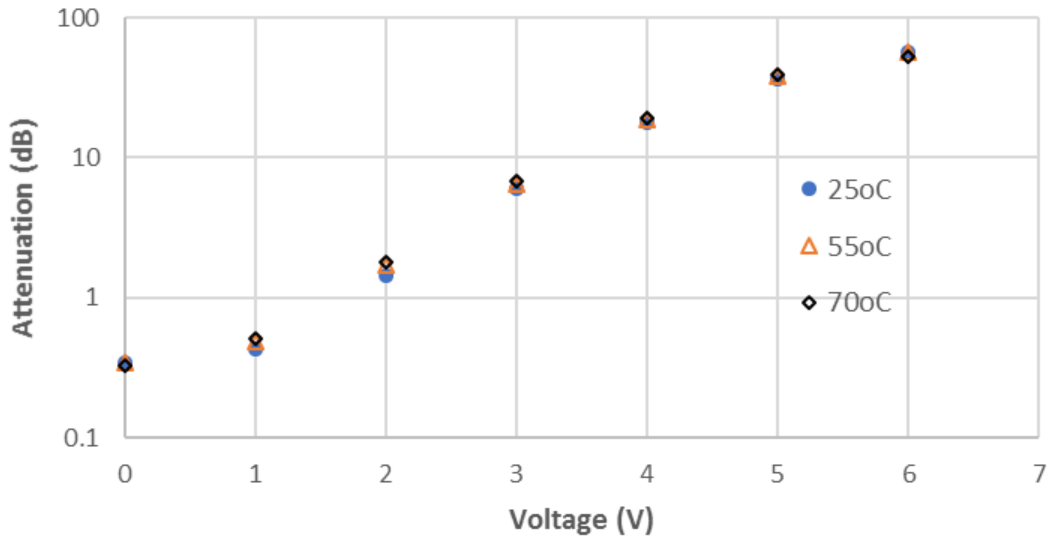
# MEMS Fiber Optical Variable Attenuator Ø 5.5 mm 2D

(70dB attenuation, 850nm, 1260-1630nm, 500mW, bidirectional)

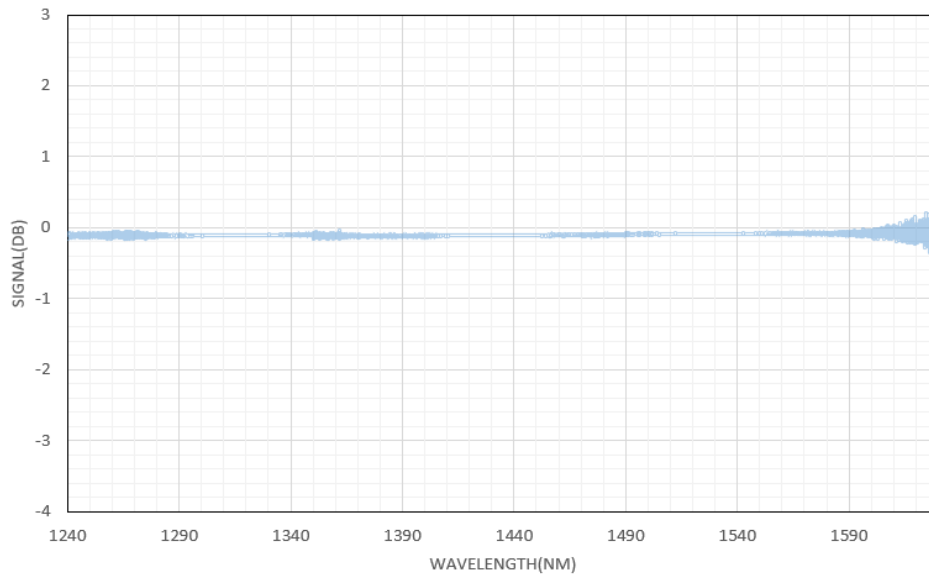


## DATASHEET

### Typical Attenuation vs. Voltage at 25°C, 55°C, 70°C



### Typical Insertion Loss vs Wavelength (1240-1630nm)



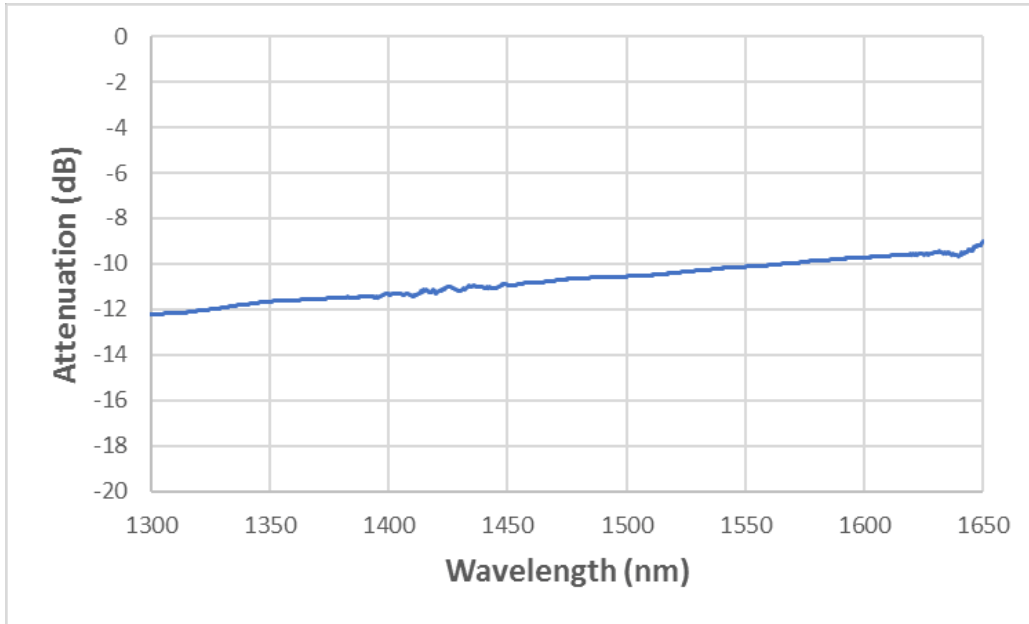
# MEMS Fiber Optical Variable Attenuator Ø 5.5 mm 2D

(70dB attenuation, 850nm, 1260-1630nm, 500mW, bidirectional)

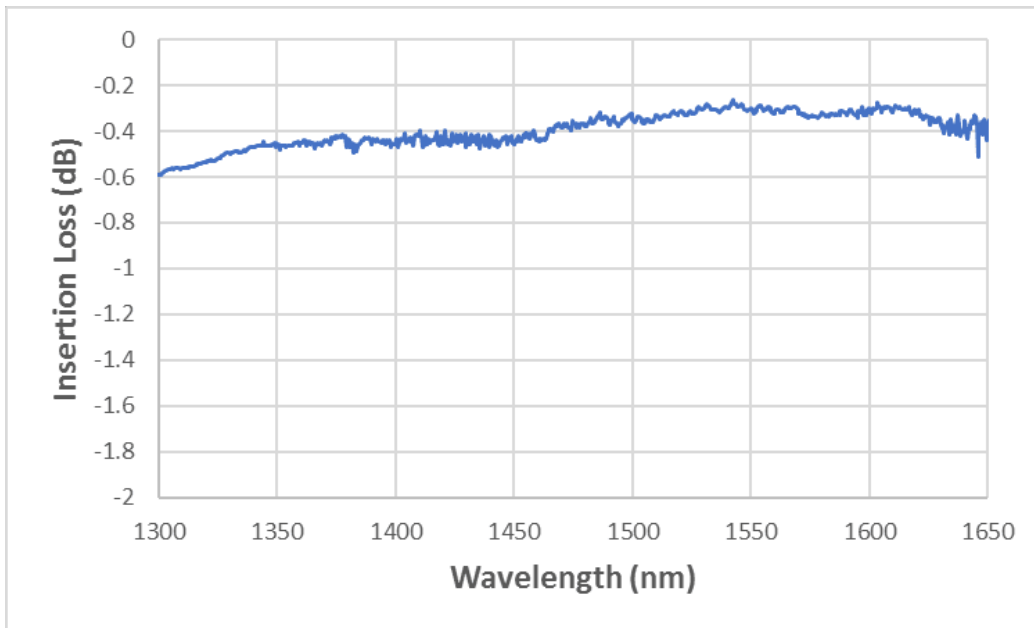


## DATASHEET

### Wavelength Dependence 10 dB



### Wavelength Dependence 0.5 dB



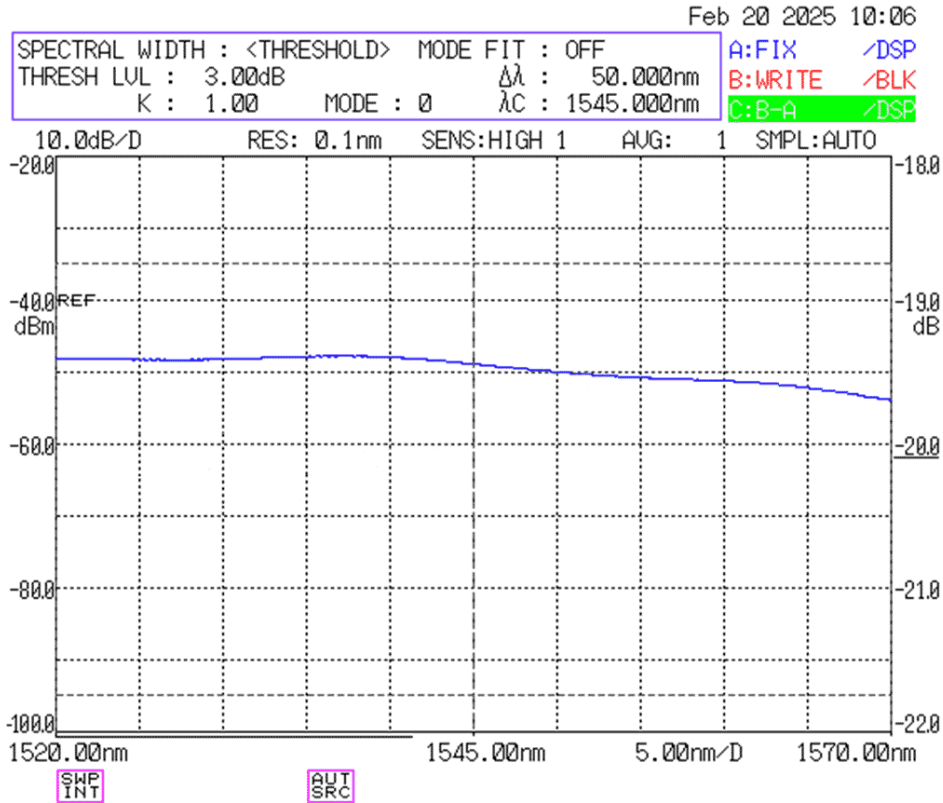
# MEMS Fiber Optical Variable Attenuator Ø 5.5 mm 2D

(70dB attenuation, 850nm, 1260-1630nm, 500mW, bidirectional)



## DATASHEET

### Typical Wavelength Dependence @20dB Attenuation



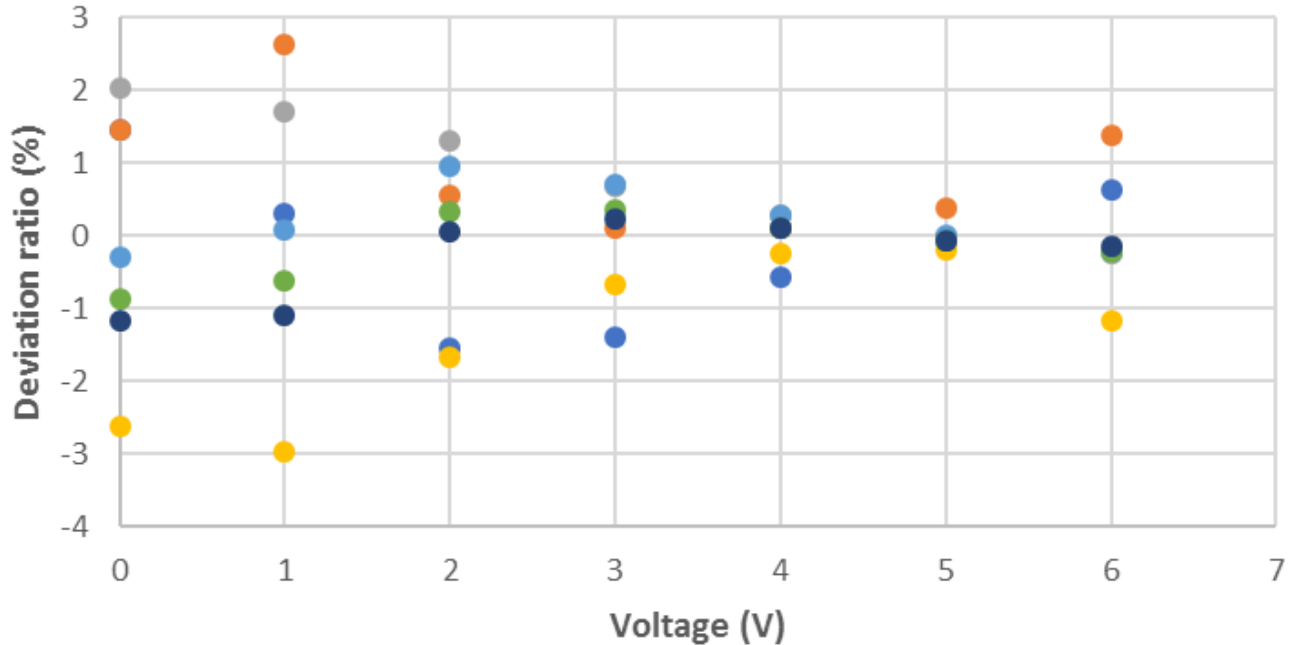
# MEMS Fiber Optical Variable Attenuator Ø 5.5 mm 2D

(70dB attenuation, 850nm, 1260-1630nm, 500mW, bidirectional)



## DATASHEET

### Typical Repeatability -Attenuation vs Applying Voltage Over 5days (5 colors)



### Ordering Information (Part Number)

Prefix	Non-Power State *	Wavelength **	Package	Attenuation	PER	Fiber Type	Fiber Cover	Fiber Length	Connector <sup>[1]</sup>
VOAM-	Transparent = T Opaque = O	1260~1620 = B 980-1250 = J 770-1100 = C 620-850 = D 600-780 = E 488-635 = G 460-600 = F 850/1310 = A Special = 0	Ø5.5mm = 5	50dB = 1 65dB = 2 70dB = 3	Regular = 1 25dB = 2 28dB = 3	SMF-28 = 1 PM1550 = B PM1310 = 3 PM980 = E PM780 = F PM850 = K PM630 = I PM460 = J MM 50/125 = 5 MM 62.5/125 = 6 SM450 = M SM460 = H SM600 = N SM630 = G 780HP = P HI1060 = L	Bare fiber = 1 0.9mm tube = 3 Special = 0	0.5m = 2 1.0m = 3 Special = 0	None = 1 FC/PC = 2 FC/APC = 3 SC/PC = 4 SC/APC = 5 LC/PC = 7 LC/APC = A LC/UPC = U Special = 0

**Note:**

\* “transparent” means no attenuation without applying a controlling voltage, the “opaque” means the highest attenuation without applying a controlling voltage

\*\* B, 3, 5 are the same device measured at different wavelengths. For B, it is typically measured at 1550nm; other wavelength measurements cost more. 8 and A are the same device measured at different wavelengths.

[1]. The connector cannot be installed directly onto bare fiber, as it is prone to damage during shipping. However, the connector can be assembled on bare fiber if a 3 cm protective loose tube is added for reinforcement. The customer can remove this protective tube after testing. The optical power handling of a standard connector is less than 0.5 W for SM28 fiber and decreases further with smaller core fibers.

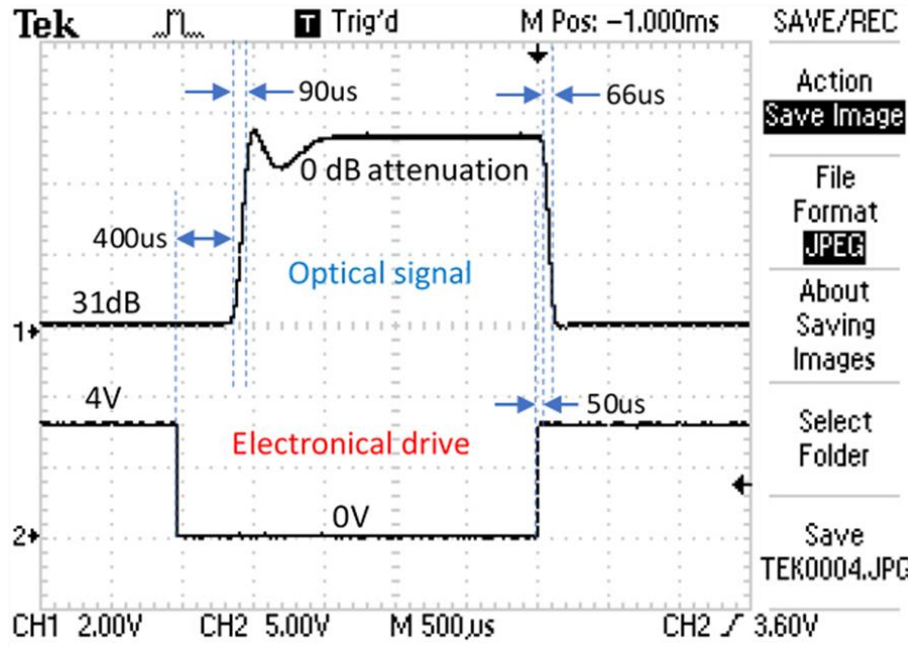
# MEMS Fiber Optical Variable Attenuator Ø 5.5 mm 2D

(70dB attenuation, 850nm, 1260-1630nm, 500mW, bidirectional)

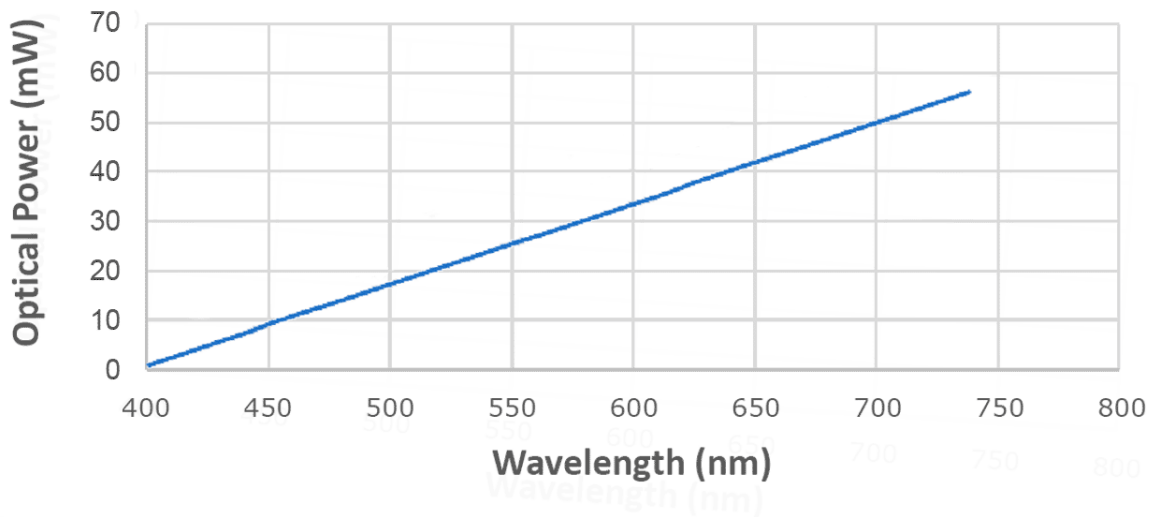


## DATASHEET

### Typical Electrical to Optical Response



### Optical Power Handling vs Wavelength for Standard SM Fibers



# MEMS Fiber Optical Variable Attenuator Ø 5.5 mm 2D

(70dB attenuation, 850nm, 1260-1630nm, 500mW, bidirectional)



DATASHEET

## Application Notes

### Fiber Core Alignment

Note that the minimum attenuation for these devices depends on excellent core-to-core alignment when the connectors are mated. This is crucial for shorter wavelengths with smaller fiber core diameters that can increase the loss of many decibels above the specification if they are not perfectly aligned. Different vendors' connectors may not mate well with each other, especially for angled APC.

### Fiber Cleanliness

Fibers with smaller core diameters (<5 µm) must be kept extremely clean, contamination at fiber-fiber interfaces, combined with the high optical power density, can lead to significant optical damage. This type of damage usually requires re-polishing or replacement of the connector.

### Maximum Optical Input Power

Due to their small fiber core diameters for short wavelength and high photon energies, the damage thresholds for device is substantially reduced than the common 1550nm fiber. To avoid damage to the exposed fiber end faces and internal components, the optical input power should never exceed 20 mW for wavelengths shorter 650nm. We produce a special version to increase the handling by expanding the core side at the fiber ends.